

# BELLA FIGURA

## Acorn Pendant

### CL660-PEN

Collection Name

**CANTERBURY COLLECTION**

Joining the Acorn family, the new Acorn pendant is a delicate design, each one is wrapped in a generous layer of glass, creating an abstract glass ribbon. Hand-crafted in our glass workshop in Britain, available in clear glass only, with either a rod or flex cord.



CL660-PEN in Clear Glass and a Polished Brass Rod

### Available Finishes

#### Glass Colour



Acorn Clear

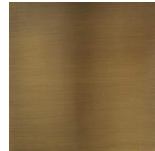
#### Metal Tops and rod



Polished Brass



Polished  
Nickel



Antique Brass

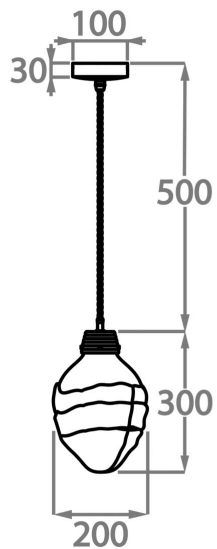


Pewter

## Available Sizes

---

**Large**  
CL660-PEN,  
Height: 30 cm (11.81")  
Diameter: 20 cm (7.87")  
1 x 40W E14  
Max Watt and Lamps: 40W x 1  
Net Weight: 5 kg / 11 lb



This pendant is supplied as standard with 50cm (20") of flex. More flex is available on request.

FINISH NOTE: Please note these pendant's are a unique design and therefore each pendant varies slightly in design and size from one another.