

# BELLA FIGURA

## Amphora Table Lamp

TL824

Collection Name

**VEGA COLLECTION**

The Amphora table lamp pays homage to ancient civilisations who bestowed the names of their gods and goddesses on some of the celestial bodies we can witness with the naked eye. The naming of these astronomical discoveries gives them personified characteristics which in turn gave us inspiration for a number of the works included in this collection. An Amphora, chic and strong in silhouette, was often rewarded to victors in contests such as the Panathenaic games, thus the symbol of praise we chose to honour these ancient discoveries.

**Compatible with**



Yacht Club



TL824 in Crackle and Bronze with 13" Tall Drum Shade in James Hare Vyne Silk French Grey 31625/10

### Available Finishes

#### Ceramic Colours



Chalk



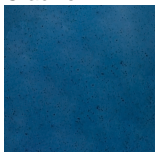
Crackle



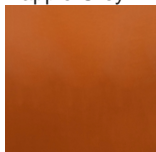
Dapple Grey



Jasper

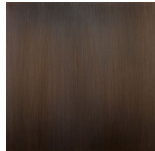


Starry Sky

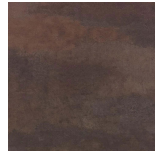


Tabasco

#### Neck and Bulb Holder



Bronze



Old English  
Brass



Polished Brass



Polished  
Nickel

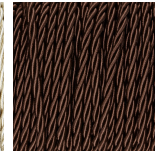
#### Silk Flex Choice



Black



Cream



Brown



Silver

## Available Sizes

---

### Size One

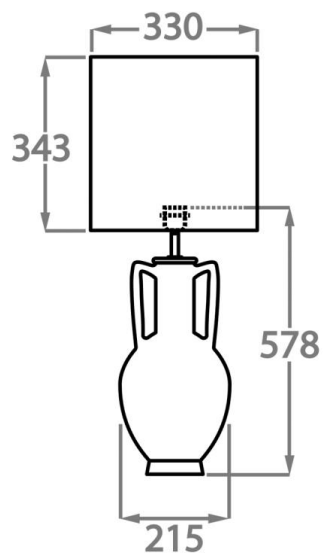
TL824,

Height: 57.8 cm (22.76")

Diameter: 21.5 cm (8.46")

1 x 40W E27

Max Watt and Lamps: 40W x 1



Dimensions are measured from the base of the lamp to the middle of the bulb holder and are excluding shade.  
Overall height with recommended 13" tall drum shade is 88.3cm - 34.8"