

# BELLA FIGURA

## Atacama Lamp

TL234

Collection Name

**HALCYON COLLECTION**

Atacama, Chile, is one of the driest areas in the world and within this remote desert lies beauty of ethereal quality. An extra-terrestrial landscape of pink birds and imposing, eerie pockets of water bubbling and jets of steam bursting into the sky. Most unusual of all is the vast white jigsaw spanning as far as the eye can see, the salt flats of Atacama. Our new design of the same name retraces the natural pattern scored through this salt mosaic in a delightful array of glass colours.

Required modifications for use on yachts - lacquer applied to all metal components, "sea rod" through centre to secure base to surfaces, with the cable exit through bottom of the base.

### Compatible with



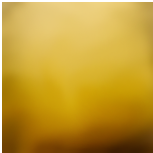
Yacht Club



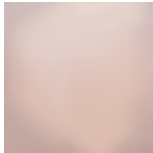
TL234 in Bronze Glass and Brushed Gold with a 11" Tall Drum in Silk Linen 3998 White

### Available Finishes

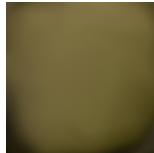
#### Glass Finish



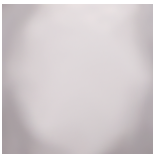
Halcyon Amber



Halcyon Blush  
Pink



Halcyon Bronze



Halcyon Clear



Halcyon Ocean  
Blue

#### Neck and Bulb Holder



Brushed Nickel



Brushed Brass



Brushed  
Bronze

#### Recommended Shade(s) (OPTIONAL)



11" Tall Drum

**Silk Flex**



Black



Brown



Cream



Silver

## Available Sizes

---

### One Size Only

TL234,

Height: 27.5 cm (10.83")

Width: 27 cm (10.63")

Depth: 22 cm (8.66")

Bulbs: 1 x 40W E27

Net Weight: 4 kg / 9 lb Cable Exit:

Bottom

Dimensions are measured from the base of the lamp to the middle of the bulb holder and are excluding shade

The overall height with a 11" tall drum shade 52cm - 20.5"

The overall height with a 15" oval drum shade 48cm 19"

Finish note: As these glass lamps are handmade by our artisans in England, they may vary slightly from piece to piece in dimension and appearance