

# BELLA FIGURA

## Atacama Lamp

TL234E

Collection Name

**HALCYON COLLECTION**

Atacama, Chile, is one of the driest areas in the world and within this remote desert lies beauty of ethereal quality. An extra-terrestrial landscape of pink birds and imposing, eerie pockets of water bubbling and jets of steam bursting into the sky. Most unusual of all is the vast white jigsaw spanning as far as the eye can see, the salt flats of Atacama. Our new design of the same name retraces the natural pattern scored through this salt mosaic in a delightful array of glass colours.

**Finish note** as these glass lamps are handmade by our artisans in England, they may vary from piece to piece slightly in dimension and appearance.

### Compatible with



Express



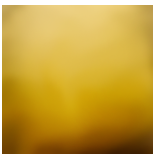
Yacht Club



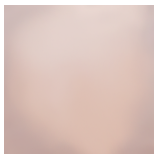
TL234 in Ocean Blue and Brushed Nickel with a 15" Oval Drum Shade in Crepe Satin 1806W 63 Petrol

### Available Finishes

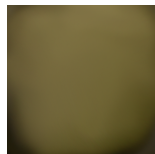
#### Glass Finish



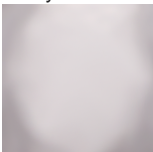
Halcyon Amber



Halcyon Blush Pink



Halcyon Bronze



Halcyon Clear



Halcyon Ocean Blue

#### Neck and Bulb Holder



Brushed Nickel



Brushed Brass

#### Recommended Shade(s) (OPTIONAL)

15" Oval

**Silk Flex**



Black



Brown



Cream



Silver

## Available Sizes

---

### One Size Only

TL234,

Height: 27.5 cm (10.83")

Width: 27 cm (10.63")

Depth: 22 cm (8.66")

Bulbs: 1 x 40W E27

Net Weight: 4 kg / 9 lb Cable Exit:

Bottom

Dimensions are measured from the base of the lamp to the middle of the bulb holder and are excluding shade

The overall height with a 15" oval drum shade 48cm - 19"

The overall height with a 11" tall drum shade 52cm - 20.5"

Finish note: As these glass lamps are handmade by our artisans in England, they may vary slightly from piece to piece in dimension and appearance