

Aviary Lantern

CL51-LAN

Collection Name

CANTERBURY COLLECTION

The Aviary family is a perfect mix of exceptional craft and modern form. The latest to join the collection is the Aviary Lantern, made up of a mix of smooth and hammered metal work, designed in a cage inspired formation. The Aviary Lantern is available with or without a shade included inside the frame as well as a number of different metal finishes

Test Certification

UL (Underwriters Laboratories) test certificates available for the USA - will incur a surcharge
IEC (International Electrotechnical Commission) test certificates available - will incur a surcharge



CL51-LAN in smooth and hammered decorated bronze

Available Finishes

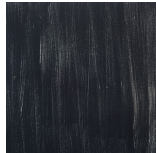
Metal Finishes



Antique Gold



Antique Silver



Lead



Decorated
Bronze

Metal Texture

Hammered Smooth

Available Sizes

One Size

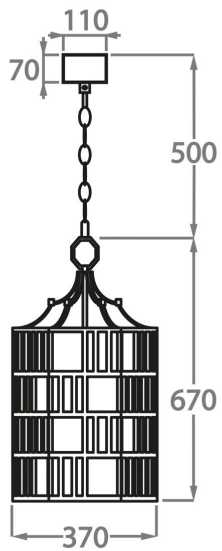
CL51-LAN,

Height: 67 cm (26.38")

Diameter: 37 cm (14.57")

4 x LED 4W E14

Max Watt and Lamps: LED 4W x 4



The dimensions of the supporting chain and ceiling rose are not included in the height measurements.
The standard chain and ceiling rose are 50cm (20") high if not otherwise specified by the customer.