

BELLA FIGURA

Bijou Large Lamp

TL661-LA

Collection Name

CONTOUR COLLECTION

An uncomplicated jewel of utmost sophistication, which will place itself effortlessly within a vast array of settings. The Bijou lamp is a fusion of English blown glass and Italian gilding to create this versatile and feminine gem of distinction, now available in a statuesque larger size. **IMPORTANT NOTE** - Wolf Grey glass finish is currently only available in singles.

Compatible with



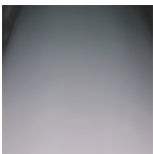
Yacht Club



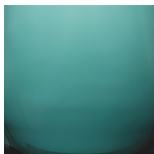
TL661-LA in Teal and Brushed Nickel 12" Tall Drum Shade in Silk Dupion 5018W/ 62

Available Finishes

Glass Finish



Wolf Grey



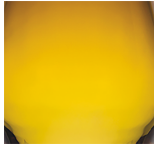
Teal



Heliotrope



Steel Blue

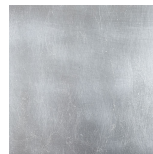


Amber

Metal Finish



Gold Leaf



Silver Leaf



Brushed Gold



Brushed Nickel

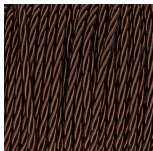
Recommended Shade(s) (OPTIONAL)

12" Tall Drum

Silk Flex



Black



Brown



Cream



Silver

Available Sizes

Small

TL661-SM,
Height: 31 cm (12.2")
Diameter: 16.5 cm (6.5")
Bulbs: 1 x 40W E27
Cable Exit: Top

Size Two

TL661-LA,
Height: 48 cm (18.9")
Diameter: 18.5 cm (7.28")
Bulbs: 1 x 40W E27

TL661-SM: Overall height with a 10" Tall Drum Shade 63cm - 24.8inch
TL661-LA: Overall height with a 12" Tall Drum Shade 75cm - 30"