

# BELLA FIGURA

## Bond Street Small Lamp

TL122-SM

Collection Name

**MAYFAIR COLLECTION**

A very contemporary table lamp with a ring of solid, clear Lucite rods in random sizes and a central brass band in a variety of finishes. Elegant, modern and understated.

### Test Certification

IEC (International Electrotechnical Commission) test certificates available - will incur a surcharge  
UL (Underwriters Laboratories) test certificates available for the USA - will incur a surcharge  
Suitable for Yachts - Rod and bolting available for use on yachts

### Compatible with



Yacht Club



TL122-SM in Clear and Polished Gold with 15" Short Drum in Silk Crepe Satin  
1806W-310 Timber Wolf

### Available Finishes

#### Lucite Finish



Clear Lucite Rods

#### Metal Finish



Polished Nickel



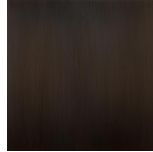
Polished Gold



Brushed Gold



Brushed Nickel



Bronze



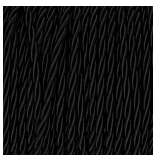
Brushed Dark Bronze

#### Recommended Shade(s) (OPTIONAL)



11" Tall Drum

#### Silk Flex



Black



Cream



Silver



Brown

## Available Sizes

---

### Small

TL122-SM,  
Height: 56 cm (22.05")  
Diameter: 12 cm (4.72")  
Bulbs: 1 x 40W E27  
Cable Exit: Bottom

### Large

TL122-LA,  
Height: 57 cm (22.44")  
Diameter: 12 cm (4.72")  
Bulbs: 1 x 40W E27  
Cable Exit: Bottom

Dimensions are measured from the base of the lamp to the middle of the bulb holder and are excluding shade.  
Overall height with an 15" short drum shade 80cm - 31.5" or with a 14" drum shade 75cm - 29.5"  
Shades can also be made with Customer Own Material (COM)