

BELLA FIGURA

Bond Street Small Lamp

TL122-SM

Collection Name

MAYFAIR COLLECTION

A very contemporary table lamp with a ring of solid, clear Lucite rods in random sizes and a central brass band in a variety of finishes. Elegant, modern and understated.

Required modifications for use on yachts - lacquer applied to all metal components with the cable exit through bottom of the base.

Test Certification

IEC (International Electrotechnical Commission) test certificates available - will incur a surcharge
UL (Underwriters Laboratories) test certificates available for the USA - will incur a surcharge
Suitable for Yachts - Rod and bolting available for use on yachts

Compatible with



Yacht Club



TL122-SM in Clear and Polished Gold with 15" Short Drum in Silk Crepe Satin
1806W-310 Timber Wolf

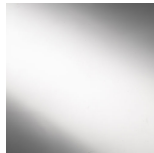
Available Finishes

Lucite Finish



Clear Lucite Rods

Metal Finish



Polished Nickel



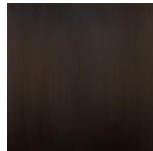
Polished Gold



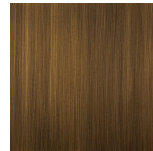
Brushed Gold



Brushed Nickel



Bronze



Antique
Brushed Brass

Recommended Shade(s) (OPTIONAL)



11" Tall Drum

Silk Flex



Black



Cream



Silver



Brown

Available Sizes

Small

TL122-SM,
Height: 56 cm (22.05")
Diameter: 12 cm (4.72")
Bulbs: 1 x 40W E27
Cable Exit: Bottom

Large

TL122-LA,
Height: 57 cm (22.44")
Diameter: 12 cm (4.72")
Bulbs: 1 x 40W E27
Cable Exit: Bottom

Dimensions are measured from the base of the lamp to the middle of the bulb holder and are excluding shade.
Overall height with an 15" short drum shade 80cm - 31.5" or with a 14" drum shade 75cm - 29.5"
Shades can also be made with Customer Own Material (COM)