

BELLA FIGURA

Brandt Floor Lamp

FL209

Collection Name

MOONLIGHT COLLECTION

The Brandt series throws us back into the Art Deco era with a sleek and confident design inspired by one of the most accomplished metalsmiths of the time, Edgar Brandt. The sweeping lines of the original motif are made current by simplification, creating this impressive and highly adaptable design, which gleams as the light falls upon its surface. The table lamp and floor lamp in this series are made with a solid glass base, in your choice of a statement Gloss Black or soft, ethereal Satin which echoes the celestial look which runs throughout the *Moonlight* collection.



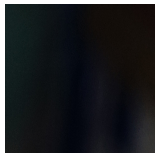
FL209 in Brushed Gold with an 18" Oval Shade in James Hare Midnight 8308/03 Velvet

Available Finishes

Lamp Base Finish



Satin Clear



Gloss Black

Metal Finish



Brushed Gold



Brushed Nickel

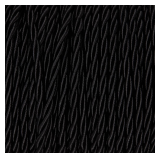


Brushed
Bronze

Recommended Shade(s) (OPTIONAL)

18" Oval

Silk Flex



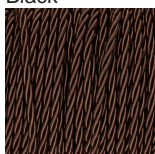
Black



Cream



Silver



Brown

Available Sizes

One Size Only

FL209,

Height: 149.5 cm (58.86")

Diameter: 35 cm (13.78")

Bulbs: 1 x 60w E27

Net Weight: 8 kg / 18 lb

Dimensions are measured from the base of the lamp to the middle of the bulb holder and are excluding shade

Shades can also be made with Customer Own Material (COM)

Overall height with an 18" oval shade is 175.5cm