

# BELLA FIGURA

## Bond Street Round Chandelier

**CL122-RO**

Collection Name  
**MAYFAIR COLLECTION**

The Bond Street Round chandelier is partnered with the Bond Street Oval and Bond Street Rectangular chandeliers. This stylish piece can be easily incorporated into a yacht interior as well as on-land designs. The Lucite rods in staggered diameters and lengths refract light into every corner of the room, creating a stunning centre point within the space

Required modifications for use on yachts - lacquer applied to all metal components.

### Test Certification

UL (Underwriters Laboratories) test certificates available for the USA - will incur a surcharge  
IEC (International Electrotechnical Commission) test certificates available - will incur a surcharge

### Compatible with



Bathroom



Yacht Club



CL122-RO-75 in Clear and Antique Brushed Brass

### Available Finishes

#### Lucite Finish



Clear Lucite  
Rods



Frosted Lucite  
Rods

#### Metal Finish



Polished  
Nickel



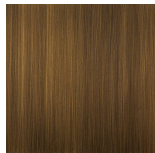
Polished Gold



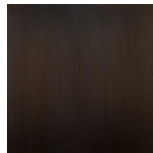
Brushed Gold



Brushed Nickel



Antique  
Brushed Brass



Bronze

**Available Sizes**

**Size One**

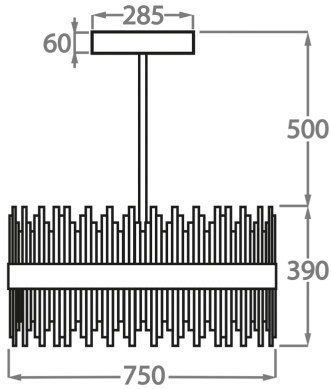
CL122-RO-75,

Height: 39 cm (15.35")

Diameter: 75 cm (29.53")

Bulbs: 2 x 45W LED strip with a life expectancy of 50,000 hours

Net Weight: 28 kg / 62 lb



**Size Two**

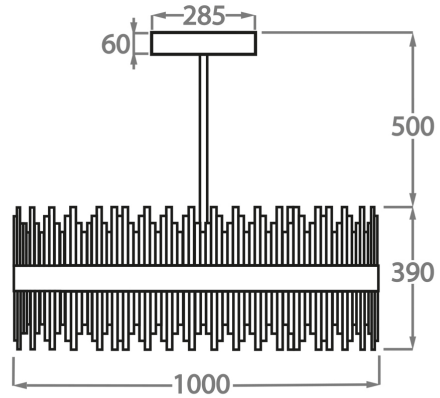
CL122-RO-100,

Height: 39 cm (15.35")

Diameter: 100 cm (39.37")

Bulbs: 2 x 60W LED strips with a life expectancy of 50,000 hours

Net Weight: 35 kg / 77 lb



**Size Three**

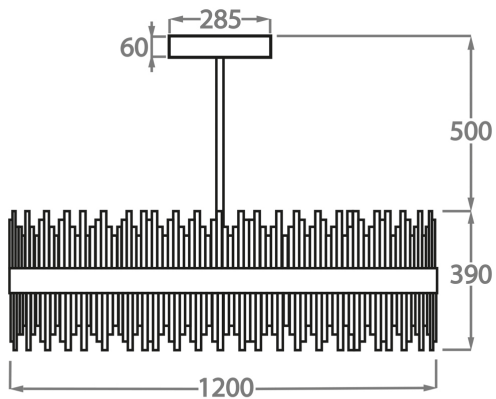
CL122-RO-120,

Height: 39 cm (15.35")

Diameter: 120 cm (47.24")

Bulbs: 2 x 75W LED strips with a life expectancy of 50,000 hours

Net Weight: 45 kg / 99 lb



Please note we offer two options for our LED lit products that you can discuss with your sales advisor:

Warm White - 2700K - 2900K

Cool White - 5000K - 6000K

The dimensions of the supporting rods and ceiling rose are not included in the height measurements

The standard rods and ceiling rose are 50cm (20") high if not otherwise specified by the customer