

# BELLA FIGURA

## Belgrave Square Chandelier

CL123-S

Collection Name

**MAYFAIR COLLECTION**

This contemporary Belgrave Square Drum chandelier with a straight ring of Lucite rods and a large central mirror in distressed glass. This ornate chandelier is lit by a long LED strip positioned above the Lucite rods to create a beautifully warm lighting effect which is reflected off the distressed mirror. With a height of only 10.5cm (4.2") plus the central rod and ceiling rose, this chandelier is perfect for rooms with slightly lower ceiling heights

### Test Certification

Suitable for Yachts - Rod and bolting available for use on yachts

UL (Underwriters Laboratories) test certificates

available for the USA - will incur a surcharge

IEC (International Electrotechnical Commission) test certificates available - will incur a surcharge

### Compatible with



Bathroom



Yacht Club



CL123-S-100 in Clear Lucite Rods and Brushed Gold with Distressed Mirror

### Available Finishes

#### Lucite Finish



Clear Lucite Rods



Frosted Lucite Rods

#### Metal Finish



Polished Nickel



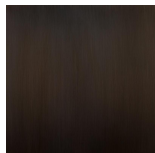
Polished Gold



Brushed Gold



Brushed Nickel



Bronze



Brushed Bronze

## Available Sizes

---

### Size One

CL123-S-80,

Height: 10.5 cm (4.13")

Diameter: 80 cm (31.5")

Bulbs: 1 x 35W LED Strip with a  
life expectancy of 50,000 hours

Net Weight: 20 kg / 45 lb

### Size Two

CL123-S-100,

Height: 10.5 cm (4.13")

Diameter: 100 cm (39.37")

Bulbs: 1 x 45W LED Strip with life  
expectancy of 50,000 hours

Net Weight: 25 kg / 55 lb

### Size Three

CL123-S-120,

Height: 10.5 cm (4.13")

Diameter: 120 cm (47.24")

Bulbs: 1 x 55W LED Strip with a  
life expectancy of 50,000 hours

Net Weight: 30 kg / 66 lb

Please note we offer two options for our LED lit products that you can discuss with your sales advisor:

Warm White - 2700K - 2900K

Cool White - 5000K - 6000K

The dimensions of the central supporting rod and ceiling rose are not included in the height measurements.

The standard rod and ceiling rose are 50cm (20") high if not otherwise specified by the customer.