

BELLA FIGURA

Concave Drum Pendant

CL412-PEN

Collection Name

RETRO MURANO COLLECTION

This contemporary ceiling light is a stunning re-imagining of a classical lantern. Whether you want to give a traditional room a modern re-styling or are looking for a unique pendant to become the perfect finishing touch to any space, this fixture can be worked seamlessly into a design. Now available in both smoke, satin and clear glass with a number of metal finishes, this drum pendant with a concave centre can be tailored to your preferences.

Test Certification

UL (Underwriters Laboratories) test certificates available for the USA - will incur a surcharge

IEC (International Electrotechnical Commission) test certificates available - will incur a surcharge



CL412-25 in Clear Triangular Flat Cut Murano Glass and Brushed Dark Bronze

Available Finishes

Metal Finishes



Chrome



Brushed Dark Bronze



Polished Gold

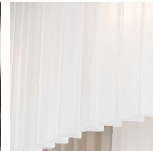
Murano Glass Colours



Clear Murano



Smoke Murano



Satin Murano

Available Sizes

Size One

CL412-PEN,

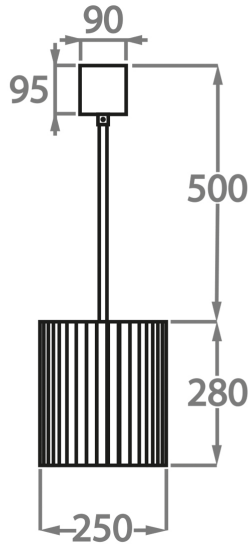
Height: 28 cm (11.02")

Diameter: 25 cm (9.84")

3 x 40W E27

Max Watt and Lamps: 40W x 3

Net Weight: 10 kg / 22 lb



The dimensions of the central rod and ceiling rose are not included in the height measurements.

The standard rod and ceiling rose is 50cm (20"), but this can be ordered in different sizes by the customer.