

# BELLA FIGURA

## Small Quadro Pendant

**CL454**

Collection Name

**RETRO MURANO COLLECTION**

An ultra-contemporary square pendant, which is extremely elegant and versatile. It is ideal for use in smaller rooms or in porches and hallways instead of a more traditional lantern. It can also be used over a breakfast bar, peninsula or central island - either as a single feature or in groups of two or three.

### Test Certification

IEC (International Electrotechnical Commission) test certificates available - will incur a surcharge  
UL (Underwriters Laboratories) test certificates available for the USA - will incur a surcharge



CL454 in Clear Triangular Flat Cut Murano Glass Rods and Chrome

### Available Finishes

#### Metal Finish



Chrome

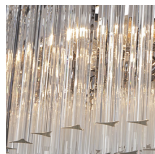


Brushed Dark  
Bronze



Polished Gold

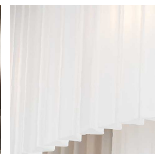
#### Murano Glass Finish



Clear Murano



Smoke  
Murano



Satin Murano

## Available Sizes

---

### One Size Only

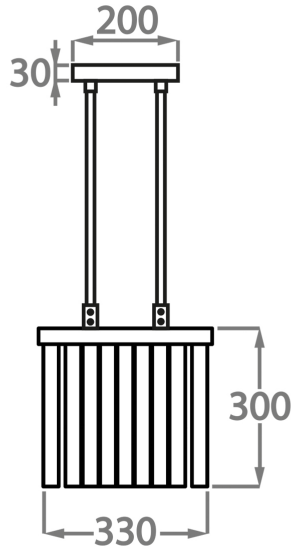
CL454,

Height: 30 cm (11.81")

Width: 33 cm (12.99")

Bulbs: 4 x 2.5W LED G9

Net Weight: 20 kg / 44 lb



The dimensions of the central rods and ceiling rose are not included in the height measurements.

Please add a minimum of 15cm (6") to take this into account. The standard rods and ceiling rose are 50cm (20"), but these can be specified in the exact size required by the customer at the time of order.