

BELLA FIGURA

Concertina Straight Mirror

M114-S

Collection Name

REFLECT COLLECTION

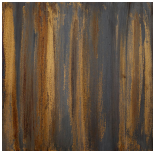
A more contemporary piece designed in a distressed bronze finish from the brutalist era of the 1970s. Encompassing the glass is a multitude of brass v-shaped strips welded together to create a subtle lighting effect.



Concertina Straight Mirror in Distressed Bronze

Available Finishes

Metal Finish



Distressed Bronze

Available Sizes

Size One

M114-S,

Diameter: 115 cm (45.28")

Depth: 3.9 cm (1.54")

Net Weight: 40 kg / 88 lb