

BELLA FIGURA

Copernicus Wall Light

WL811

Collection Name

VEGA COLLECTION

The origin of the Copernicus series is a theory born of astronomer Nicolaus Copernicus who popularised the idea that the solar system was centred around the Sun not the Earth. The angular arms and spherical details on both the wall light and floor lamp are a playful expression of orbital patterns of the Solar System. The floor lamp is finished with a chic alabaster base that offer this sculptural piece stability with a touch of elegance.

Required modifications for use on yachts - lacquer applied to all metal components.

Compatible with



Bathroom



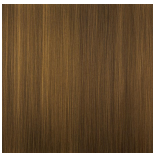
Yacht Club



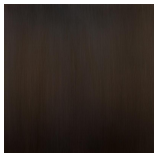
WL811 in Brushed Dark Bronze with 6" Copernicus Shades in James Hare Vyne Silk 31625-01

Available Finishes

Metal Finish



Antique
Brushed Brass



Bronze



Brushed Gold



Brushed Nickel

Available Sizes

Size One

WL811,

Height: 32.5 cm (12.8")

Width: 50 cm (19.69")

Depth: 14.7 cm (5.79")

Bulbs: 2 x 25W E14

Net Weight: 2 kg / 4.4 lb

