

BELLA FIGURA

Crest Pendant

CL238

Collection Name

HALCYON COLLECTION

Rolling waves tumble and break over the dome of these atmospheric glass pendants which feature a hot finished edge, preserving the molten fluidity of the glass. These temperate waves are the perfect antidote to the tumultuous storm captured within its table lamp counterpart: the calm before the storm.



CL238 in Tea Glass and Brushed Dark Bronze with Brown Flex

Available Finishes

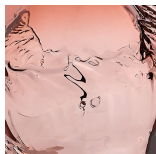
Glass Finish



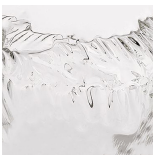
Crest Bronze



Crest Ocean
Blue



Crest Tea



Crest Clear

Metal Finish



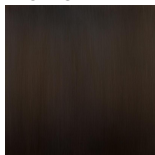
Brushed Dark
Bronze



Brushed Gold



Brushed Nickel



Bronze

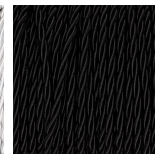
Silk Flex



Brown



Silver



Black



Cream

Available Sizes

One size only

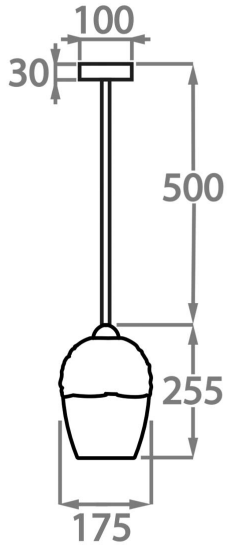
CL238,

Height: 25.5 cm (10.04")

Diameter: 17.5 cm (6.89")

Bulbs: 1 x 40W E14

Net Weight: 3 kg / 7 lb



This pendant is supplied as standard with 100cm (20") of flex. More flex is available on request, this design can be adjusted on site to desired hanging drops.

Finish note: these pendant's are a unique design and therefore each pendant varies slightly in design and size from one another