

# BELLA FIGURA

## Cypress Pendant Cluster

**CL236-PEN-3**

Collection Name

**HALCYON COLLECTION**

Presenting the all-new Cypress Pendant Cluster. An embodiment of natural elegance and artistic craftsmanship. Inspired by the majestic Bald Cypress tree, this pendant captures the essence of strength and serenity in a stunning lighting fixture. Just as the tree's roots intertwine in the heart of the mangrove, the pendant's design showcases a cluster of rounded forms, each representing resilience and unity. Crafted with meticulous attention to detail, the pendant's glass surfaces are expertly hand-carved, mimicking the texture of the Cypress tree's bark. These glass elements are thoughtfully acid dipped, resulting in a captivating, frosted appearance that diffuses light with a soft, enchanting glow. The Cypress Cluster Pendant is more than just a lighting fixture; it's a work of art that brings the tranquillity of nature into your living space. Whether suspended above a dining table or gracing a cosy corner, this pendant radiates a sense of timeless beauty and invites you to bask in its serene ambiance.



CL236-PEN-3 in Bronze, Blush & Clear and Brushed Gold

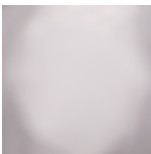
### Compatible with



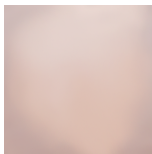
Bathroom

### Available Finishes

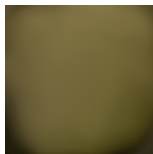
#### Glass Finish



Halcyon Clear

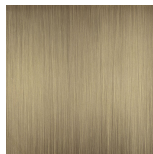


Halcyon Blush  
Pink



Halcyon  
Bronze

#### Metal Finish



Brushed  
Bronze



Brushed Gold



Brushed Nickel

## Available Sizes

---

### Size One

CL236-PEN-3,

Height: 66 cm (25.98")

Diameter: 58.2 cm (22.91")

Bulbs: 3 x 25W E14

Dimmable

Net Weight: 12 kg / 26 lb

The dimensions of the central rod and ceiling rose are not included in the height measurements. The standard rod and ceiling rose height is 50cm (20") if not otherwise specified by customer.

Minimum rod height is 20cm and maximum is 100cm. Please enquire for heights exceeding 100cm.

Finish note: Due to the nature of our hand made product our finishes can vary from piece to piece. Please be aware studio lighting can affect tone of metals and alter material appearance slightly. For more details, speak to your sales advisor who may be able to organise sampling upon request.