

# BELLA FIGURA

## Double Ice Block Lamp

TL657

Collection Name

**MODERN MURANO COLLECTION**

A very contemporary table lamp made out of a two rectangular interlocking blocks of hand-made, sculptured Murano glass with a solid aluminium base in a variety of metal finishes.

### Test Certification

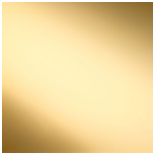
IEC (International Electrotechnical Commission) test certificates available - will incur a surcharge  
UL (Underwriters Laboratories) test certificates available for the USA - will incur a surcharge  
Suitable for Yachts - Rod and bolting available for use on yachts



TL657 in Clear Glass and Bronze with a 12 Inch Tall Drum Shade in Silk Crepe Satin  
1806W/ 505 Quail

### Available Finishes

#### Metal Finish



Polished Gold



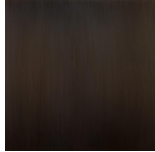
Polished Nickel



Brushed Gold



Brushed Nickel



Bronze

#### Murano Glass Finish



Clear

#### Recommended Shade(s) (OPTIONAL)

12" Tall Drum

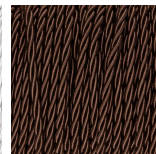
#### Silk Flex



Black



Silver



Brown



Cream

## Available Sizes

---

### One Size Only

TL657,

Height: 56 cm (22.05")

Width: 15 cm (5.91")

Depth: 12 cm (4.72")

Bulbs: 1 x 40W E27

Cable Exit: Bottom

Dimensions are measured from the base of the lamp to the middle of the bulb holder and are excluding shade

Overall height with a 12" tall drum shade 84cm - 33"

Shades can also be made with Customer Own Material (COM)