

# BELLA FIGURA

## Eyre Lamp

TL235

Collection Name

**HALCYON COLLECTION**

Indigenously known as Kati-Thanda, Lake Eyre is usually cinder dry, the lakebed blanketed by a patchwork of tessellating salt segments, as reflected by the scalloped surface of our Eyre table lamp. Of the 5 new colourways, Blush Pink is of particular note - an emulation of the natural phenomenon which takes place when the lake is flooded, bringing a flourish of salt-loving algae and halobacterium who turn the waters a brilliant pink.

### Compatible with



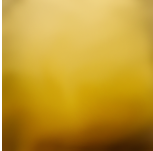
Yacht Club



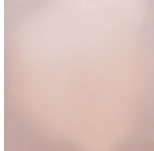
TL235 in Blush Pink Glass and Brushed Gold with an 11" Tall Drum Shade in (COM) Zoffany Cybelle Buff 332735

### Available Finishes

#### Glass Colour



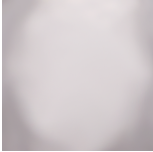
Halcyon Amber



Halcyon Blush Pink



Halcyon Bronze



Halcyon Clear



Halcyon Ocean Blue

#### Neck and Bulb Holder



Brushed Brass



Brushed Nickel

#### Recommended Shades

11 inch Tall Drum

#### Silk Flex Choice



Black



Brown



Cream



Silver

## Available Sizes

---

### One size only

TL235,

Height: 37.5 cm (14.76")

Width: 20.5 cm (8.07")

Depth: 16.5 cm (6.5")

1 x 40W E27

Max Watt and Lamps: 40W x 1

Net Weight: 4 kg / 9 lb Cable Exit:  
Bottom

Dimensions are measured from the base of the lamp to the middle of the bulb holder and are excluding shade  
The overall height with a 11" tall drum shade 62cm - 24.5"

Finish note: As these glass lamps are handmade by our artisans in England, they may vary slightly from piece to piece in dimension and appearance