

BELLA FIGURA

Halley Table Lamp

TL820

Collection Name

VEGA COLLECTION

The Halley table lamp is a stylised impression of the most famous comet to grace our skies, Halley's comet. This comet is a rare thing to behold but with a famous reputation for its everlasting presence. To honour 'Halley' honestly was to create a design that would stand the test of time, something that answers to both traditional and modern tastes in one and is in effect timeless.

Compatible with



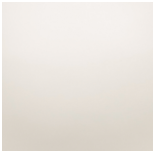
Yacht Club



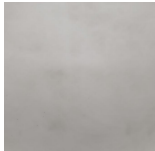
TL820 in Chalk and Polished Brass with 14" Tall Drum Shade in James Hare Vyne Silk French Grey 31625/10

Available Finishes

Ceramic Colours



Chalk



Dolomite

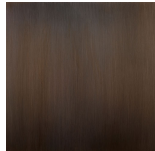


Oil

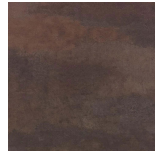


Crackle

Neck and Bulb Holder



Bronze



Old English
Brass

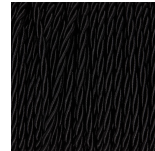


Polished Brass



Polished
Nickel

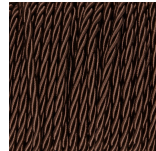
Silk Flex Choice



Black



Cream



Brown



Silver

Available Sizes

Size One

TL820,

Height: 50.3 cm (19.8")

Width: 28 cm (11.02")

Depth: 28 cm (11.02")

1 x 40W E27

Max Watt and Lamps: 40W x 1

Dimensions are measured from the base of the lamp to the middle of the bulb holder and are excluding shade.

Overall height with recommended 14" tall drum shade is 83.3cm - 32.8"