

# BELLA FIGURA

## Nilssen Floor Lamp

FL212

Collection Name

**MOONLIGHT COLLECTION**

Although this series of designs has totally evolved, the roots of the design are centred around the work of silversmith Wiwen Nilssen. Considering the corners and facets of his tableware creations, we have softened the geometry of Nilssen's iconic design language and arrived at these stacking glass elements, infusing their cores with richly bubbled detailing which glitter brilliantly when illuminated.



FL212 in Brushed Dark Bronze with a 16" Tall Drum Shade in James Hare Custom Fabric

### Available Finishes

#### Glass Finish



Bubble

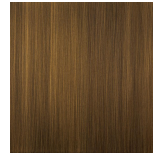
#### Metal Finish



Brushed Gold



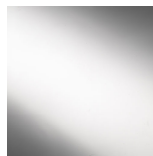
Brushed Nickel



Antique  
Brushed Brass



Polished Gold

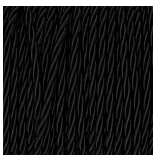


Polished Nickel

#### Recommended Shade(s) (OPTIONAL)

16" Tall Drum

#### Silk Flex



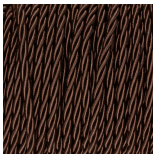
Black



Cream



Silver



Brown

## Available Sizes

---

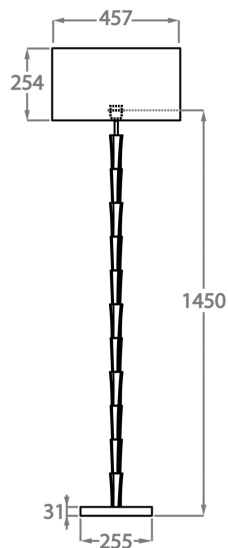
### One Size Only

FL212,

Height: 145 cm (57.09")

Diameter: 25.5 cm (10.04")

Bulbs: 1 x 60w E27



Dimensions are measured from the base of the lamp to the middle of the bulb holder and are excluding shade

Shades can also be made with Customer Own Material (COM)

Overall height with an 18" tall drum shade is 175cm