

# BELLA FIGURA

## Prima Wall Light

WL391

Collection Name

**CONTOUR COLLECTION**

'Prima ballerina assoluta' – a title reserved for only the most exceptional ballet dancer. Perfectly en pointe, a hand crafted ribbon of hammered iron holds effortless tension and sylph-like grace. A lustrous silk shade completes the ensemble as the dance of light plays out around our majestic Prima wall light. This wall light can be purchased as a mirrored pair.

**Compatible with**



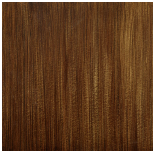
Yacht Club



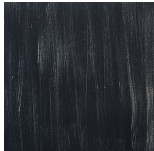
WL391 in Hammered Antique Gold with a 16" Half Moon Shade in Silk Crepe Satin  
1806W-120 Dill

**Available Finishes**

**Metal Finish**



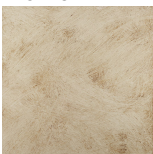
Decorated  
Bronze



Lead



Antique Gold



Antique Silver

## Available Sizes

---

### One Size

WL391,

Height: 33 cm (12.99")

Diameter: 24 cm (9.45")

Bulbs: 1 x 40W E14

Dimensions above are without the shade, overall height with a 16" Half Moon Shade 55cm - 21.65"

Notes: This wall light can be purchased as a mirrored pair.

Shade Note: Please note the shade on this product is a key hole fitting