

BELLA FIGURA

Pyrus Lamp

TL162

Collection Name

CONTOUR COLLECTION

The fruit from the tree of the Pyrus genus – the humble pear, the perfect name for our latest ceramic design. Curvaceous but sleek, our Pyrus lamp renews this classic pear shape, creating a chic outline for superior interior styling. Illuminated by six new glossy glazes, this piece is as versatile as it is vivacious.



TL162 in Admiral Blue and Polished Nickel with 13" Tall Drum Shade in James Hare Vienne Silk Chalk 31458/01

Available Finishes

Ceramic Finish



Tabasco

Admiral Blue

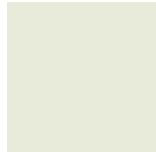
Dark Teal



Mustard

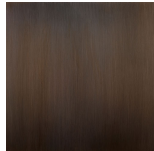


Beluga



Parchment

Neck and Bulb Holder



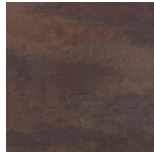
Bronze



Polished Brass



Polished Nickel

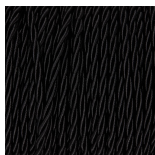


Old English
Brass

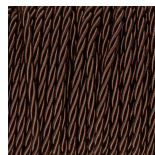
Recommended Shade(s) (OPTIONAL)

13" Tall Drum

Silk Flex



Black



Brown



Cream



Silver

Available Sizes

One Size

TL162,

Height: 56 cm (22.05")

Diameter: 30 cm (11.81")

Bulbs: 1 x 40W E27

Net Weight: 3 kg / 7 lb Cable Exit:

Bottom

Dimensions are measured from the base of the lamp to the middle of the bulb holder and are excluding shade

Overall height with recommended 13" tall drum shade is 85.5cm

Shades are also available in Customer Own Material (COM)