

BELLA FIGURA

Rime Pendant

CL52

Collection Name

CANTERBURY COLLECTION

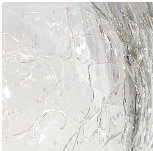
A classic pendant light with an artfully fractured edge and the crackled appearance of frozen ice, which encases the hand-blown glass beneath. Once lit, the refraction of light creates some truly exquisite patterns, which are unique to each pendant.



CL52 in Clear Crackled Glass on a Polished Gold Rod

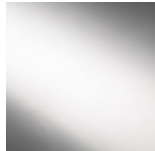
Available Finishes

Glass Finish



Clear Crackled

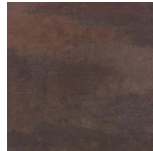
Metal Finish



Polished
Nickel



Polished Gold



Old English
Brass

Available Sizes

Large

CL52-LA,

Height: 24.5 cm (9.65")

Diameter: 19 cm (7.48")

Bulbs: 1 x 40W E14

Net Weight: 3 kg / 7 lb

This pendant is supplied as standard with 50cm (20") of chain. More chain is available on request

Please note these pendant's are a unique design and therefore each pendant varies slightly in design and size from one another