

Simple Pendant

CL03

Collection Name

HALCYON COLLECTION

Simplified luxury, a brass pendant gallery on which to suspend one of our deluxe silk lampshades. Available in four house finishes; Brushed Nickel, Brushed Gold, Brushed Brass and Bronze, the Simple Pendant is sold only in conjunction with a Bella Figura lampshade, all of which are made in-house in the UK. Lucite or fabric diffuser available on request.

Compatible with

Yacht Club
Image not found or type unknown



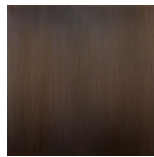
CL03 in brushed brass with 16" drum shade in crepe satin 1806W/310 Timberwolf

Available Finishes

Diffuser Finishes

Clear Frosted Lucite Fabric Cut-Out

Metal Finishes



Bronze



Antique
Brushed Brass



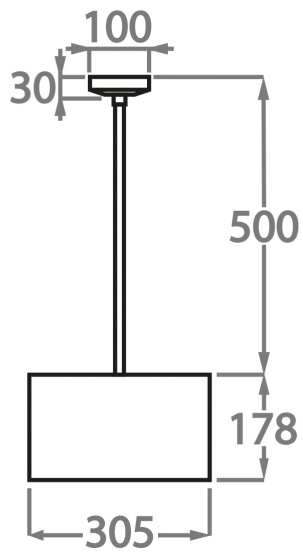
Brushed Gold



Brushed Nickel

Available Sizes

One size only
CL03,
1 x 40W E27
Max Watt and Lamps: 40W x 1



This pendant is completely customisable on the overall desired height.

Drops exceeding 100cm (39â€™™â€™™) will incur a surcharge, and minimum rod height is 10cm.

Standard ceiling rose diameter: 11cm (4â€™™â€™™)

Drums shades available up to 20â€™™

Lucite or fabric diffuser available on request.