

BELLA FIGURA

Fairmont Lamp

TL289

Collection Name

ART DECO COLLECTION

A beautiful table lamp in cast and polished Lucite with a stepped brass base. This table lamp is inspired by a 1930's original Art Deco design from our archive.

Required modifications for use on yachts - lacquer applied to all metal components with the cable exit through bottom of the base.

Test Certification

IEC (International Electrotechnical Commission) test certificates available - will incur a surcharge
UL (Underwriters Laboratories) test certificates available for the USA - will incur a surcharge
Suitable for Yachts - Rod and bolting available for use on yachts

Compatible with



Yacht Club



TL289 in Clear and Bronze with a 11" Tall Drum in Silk Crepe Satin 1806W-310
Timber Wolf

Available Finishes

Lucite Finish



Clear Lucite Rods

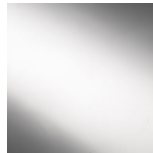


Frosted Lucite Rods

Metal Finish



Brushed Nickel



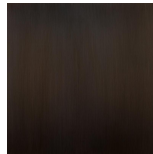
Polished Nickel



Brushed Gold



Polished Gold



Bronze



Brushed
Bronze

Recommended Shade(s) (OPTIONAL)



11" Tall Drum

Silk Flex



Black



Cream



Silver



Brown

Available Sizes

One Size Only

TL289,

Height: 47 cm (18.5")

Width: 13 cm (5.12")

Bulbs: 1 x 40W E27

Net Weight: 5 kg / 11 lb Cable Exit:

Bottom

Dimensions are measured from the base of the lamp to the middle of the bulb holder and are excluding shade.

Overall height with an 11"• tall drum shade 76cm - 30"•

Shades can also be made with Customer Own Material (COM)