

# BELLA FIGURA

## Carlyle Lamp

TL291

Collection Name

**ART DECO COLLECTION**

An extremely elegant table lamp with ten circular columns of cast & polished Lucite individually set into a brass base and top. This is an Art Deco inspired lamp that is very modern and perfect for stylish contemporary interiors.

Required modifications for use on yachts - lacquer applied to all metal components with the cable exit through bottom of the base.

### Test Certification

IEC (International Electrotechnical Commission) test certificates available - will incur a surcharge  
UL (Underwriters Laboratories) test certificates available for the USA - will incur a surcharge  
Suitable for Yachts - Rod and bolting available for use on yachts

### Compatible with



Yacht Club



TL291 in Clear and Polished Gold with 11" Tall Drum in Silk Crepe Satin 1806W-26 Nutmeg

### Available Finishes

#### Lucite Finish



Clear Lucite Rods



Frosted Lucite Rods

#### Metal Finish



Brushed Nickel



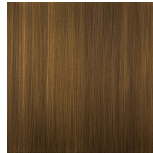
Polished Nickel



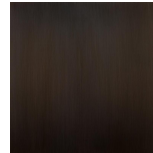
Brushed Gold



Polished Gold



Antique  
Brushed Brass



Bronze

#### Recommended Shade(s) (OPTIONAL)



11" Tall Drum

**Silk Flex**



Black



Cream



Silver



Brown

## Available Sizes

---

### One Size Only

TL291,

Height: 46 cm (18.11")

Width: 14 cm (5.51")

Bulbs: 1 x 40W E27

Net Weight: 5 kg / 11 lb Cable Exit:

Bottom

Dimensions are measured from the base of the lamp to the middle of the bulb holder and are excluding shade.

Overall height with an 11" tall drum shade 76cm - 30"

Shades can also be made with Customer Own Material (COM)